

# RAMPA®

*Good idea. Let's make it!*

May 2024

## RAMPA NEWS

# RAMPA inserts type TSM: The new solution for concrete

## RAMPA-inserts type TSM

the new solution for concrete

- ✓ Easy, quick and safe installation
- ✓ Special thread geometry for a secure hold
- ✓ Clean installation appearance without disruptive elements

# NEW



We are pleased to present our latest product innovation – discover the new Rampa inserts type TSM - the first fastening solution specially developed for concrete with a hexalobular drive, they enable simple and secure installation in concrete using a tangential screwdriver. Your solution for efficiency and reliability in fastening technology.

*Good idea. Let's make it!*

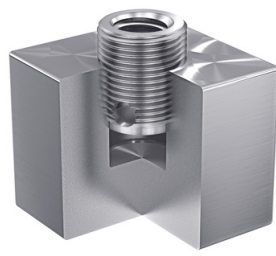
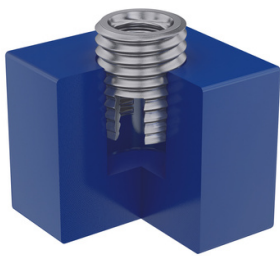
### Why the Rampa inserts type TSM are perfect for your next construction project:

#### Easy installation:

With the Rampa inserts type TSM, installation is child's play. Thanks to the hexalobular drive using a tangential screwdriver, installation is simple, quick and safe. You benefit from considerable relief, especially when working overhead.

**RAMPA GmbH & Co. KG**

Auf der Heide 8 | 21514 Büchen | Tel. +49 (0) 4155 8141-0 | Fax +49 (0) 4155 8141-80 |  
mail@rampa.com | www.rampa.com



# RAMPA®

*Good idea. Let's make it!*

## RAMPA NEWS

### **Demountable:**

Flexibility is key: Rampa TSM sockets can be dismantled quickly and easily if required. This means you always remain flexible and can make adjustments whenever necessary.

### **High load values:**

You can rely on maximum stability: the special thread geometry ensures a secure hold and enables high loads in concrete. Perfect for demanding applications.

### **Flush with the surface:**

For a flawless result: flush mounting ensures a clean installation appearance without any disruptive elements. Your projects not only look good, they are also functionally well thought out.

### **Internal thread:**

Versatility meets practicality: The metric internal thread of the Rampa TSM couplers allows them to be used for a wide range of applications, making your projects even more flexible and adaptable.

### **Small edge distances:**

Optimum use of space: Small center and edge distances allow for installation close to the edge and close together. This allows you to make maximum use of the available space.

Our [Rampa inserts type TSM](#) have European Technical Approval ETA-23/0542, which underlines their quality and reliability.

Our Rampa inserts type TSM are approved for concrete strength classes from C20/25 to C50/60 and are suitable for cracked and non-cracked concrete as well as for masonry, aerated concrete and wood.

Manufactured from high-quality galvanized steel, they offer a durable and robust fixing. The internal thread sizes M6, M8 and M10 ensure flexible application options and maximum security in your projects.

Rely on [Rampa inserts type TSM](#) and benefit from simple installation, high flexibility and impressive stability.

**RAMPA GmbH & Co. KG**

Auf der Heide 8 | 21514 Büchen | Tel. +49 (0) 4155 8141-0 | Fax +49 (0) 4155 8141-80 |  
mail@rampa.com | www.rampa.com